



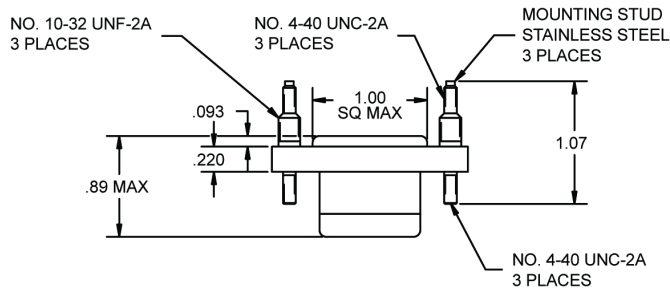
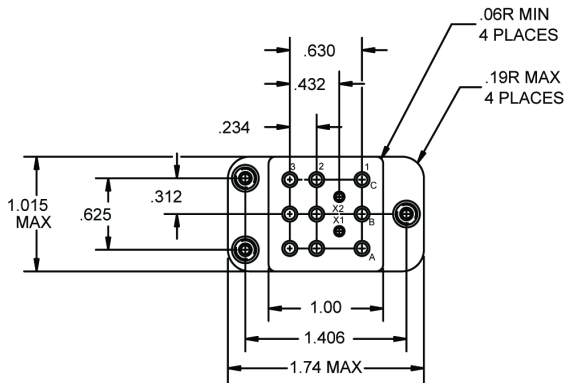
Basic socket series designation for:

Series KC

Designed to the standards and requirements of:

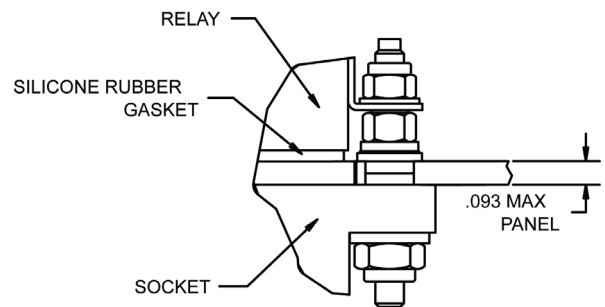
MIL-DTL-12883/48

SOCKET DRAWING



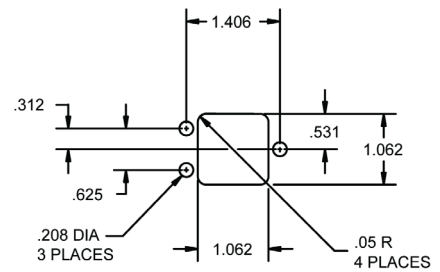
HARDWARE MOUNTING

MOUNTING DETAIL 3 PLACES



MOUNTING DIMENSIONS

SUGGESTED MOUNTING HOLE LAYOUT



GENERAL CHARACTERISTICS

1. Supplied with mounting hardware No. 12 contacts, No. 12 crimp for power terminals; No. 16 contacts, No. 16 crimp for coil terminals.	
2. Standard tolerances	.xx ± .01; xxx ± .005
3. Weight	.112 lbs. max
4. Temperature range	-70° C to +125° C